



Control

In September 2013 first trials with plocher soil activator 1-2-3 dosage 300 g/ml per hectare were conducted, beginning with only every second row with PLOCHER and every other as control. It can be seen very well that the ground is open on the left during the check. In the lane on the right picture, it is clearly visible that the grass is growing there again. A significant reduction in waterlogging On the PLOCHER lane was also observed. After the first year, the customer was very enthusiastic and decided to use the PLOCHER overall concept to handle his entire business.



With PLOCHER after 1/2 year



Control

**plocher agro-kat = (spraying with spring water effect), plocher humus soil me, plocher combi-leaf mg/do and plocher leaf-special** for the spray liquid. Always pour in the PLOCHER products first and then add the other products. plocher combi-leaf mg/do and plocher leaf-special were used alternately, each 200 - 300 g per hectare, used in every spray. In the first year, unchanged dosage of chem.-synth. Pesticides were maintained.



With PLOCHER after 1 year



In the second year, the chem.-synth. Crop protection products were reduced by 20%.

May 2015 with the PLOCHER overall concept:

plocher humus soil me, plocher combi-leaf do and combi-leaf mg.

2 soil treatments per year and with each spraying plocher combi-leaf.

**Observations:**

No more hard, compacted soil, no more waterlogging.

When mulching, you had to drive more slowly, so dense was the grass.

After a week, the smell test showed that the cut had a very pleasant smell. Rot and mold were not detectable.



Control



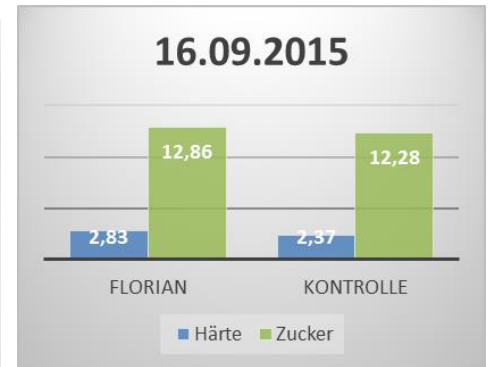
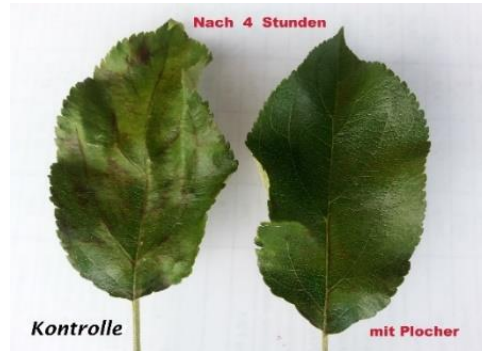
With PLOCHER

The soil test clearly shows (picture control **front left** and picture with PLOCHER **front right**): The soil is looser and has many earthworm holes. About 15 months ago, 5 spade samples were taken and only one earthworm could be found. In April 2016 - after 2.5 years - only 3 spade samples were taken, but 5 earthworms were found (see picture on the right). In general, more soil life could be detected. The earth has a very good and pleasant smell.



A leaf test in July 2014 under the same conditions, you can clearly see after 2 and 4 hours:

The control leaf was almost without juice, but with PLOCHER the leaf was still juicy and green. The conclusion from this: In the apples, this could give advantages for storage!



### Treating the causes instead of fighting symptoms

In September 2015, a sugar test and hardness test - on both sides of the apple - were carried out on 5 apples (Golden). With PLOCHER, a slightly higher sugar content could be detected, and the apple was harder. During harvesting, there were also clearly fewer bruises observed on the apple.

the 2.5 years, the customer has delivered the same quantity and excellent quality of fruit. This means: with PLOCHER it is possible to reduce the use of fertilizer and reduce crop protection products further and further, while maintaining constant production and high quality.

In 2016, the chem.-synth. crop protection products were reduced by 30% and fertilizer by half, this can save a lot of expenses.

PLOCHER products can be used anywhere, on all farms, whether organic or integrated cultivation, whether vegetables, grains, berries, fruit or viticulture, etc.

Environmental protection is included!

**Help us to be more considerate of our nature, with PLOCHER this is possible !!**

*To the left of the path control in full bloom, to the right with Plocher almost withered. Through the activity of soil biology, the soil heats up faster and thus the vegetation can also start earlier! **07.05.2016***

plocher agro-kat for your sprayer



*It couldn't be easier!*



**Our spray rod 1.4 m long with 5 swiveling nozzles jointly developed with especially Plocher customers for the optimal application of "plocher humus soil me".**  
**At a speed of 8 – 10 km/h and approx. 6 bar pressure and the ideal quantity of approx. 700 litres of water per hectare were applied to the entire lane.**  
**The spray pad can be mounted up and down on any device in just 10 minutes.**



# Use of PLOCHER products in fruit growing



- 300 ml/ha plocher leaf-special me 2 – 3 sprays in spring
- 300 g/ha of plocher combi-leaf mg and do from April to September alternately as needed
- 300-600 g/ha plocher combi-leaf mg with foliar fertilizer
- 300 ml/ha of plocher leaf-special me and 300 ml/ha of plocher humus soil me mixed over the leaves in autumn.
- 1 l/ha of plocher humus soil me in spring, after mulching in June and in autumn.
- Fazit - 5 years of PLOCHER service:

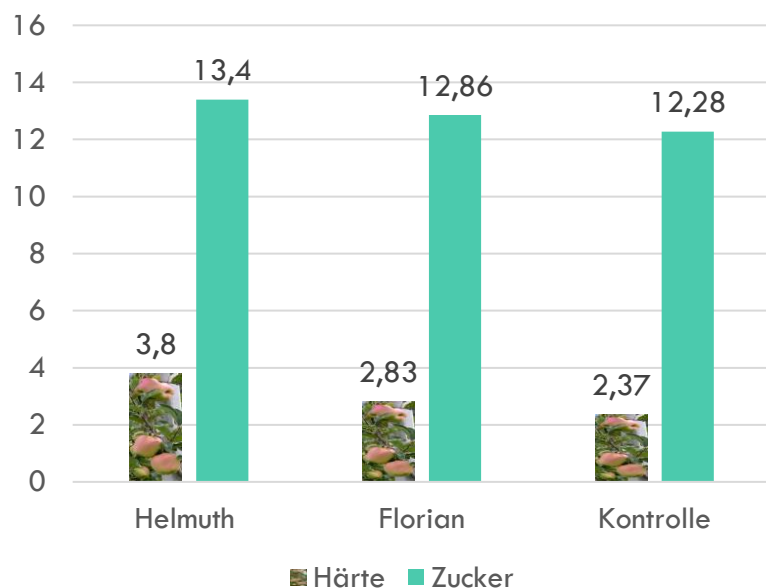
Quality: Improved

Quantity: Constant

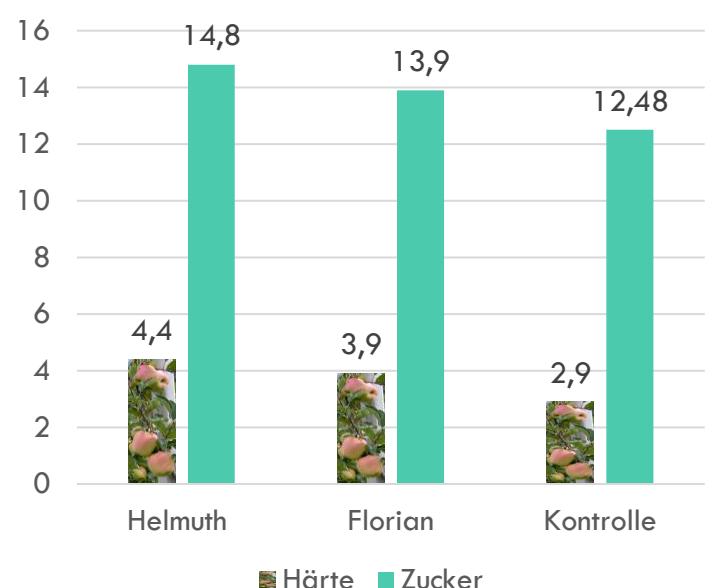
Expenditure on PPPs and fertilizer: Reduced

## HARDNESS + SUGAR TEST

16.09.2015

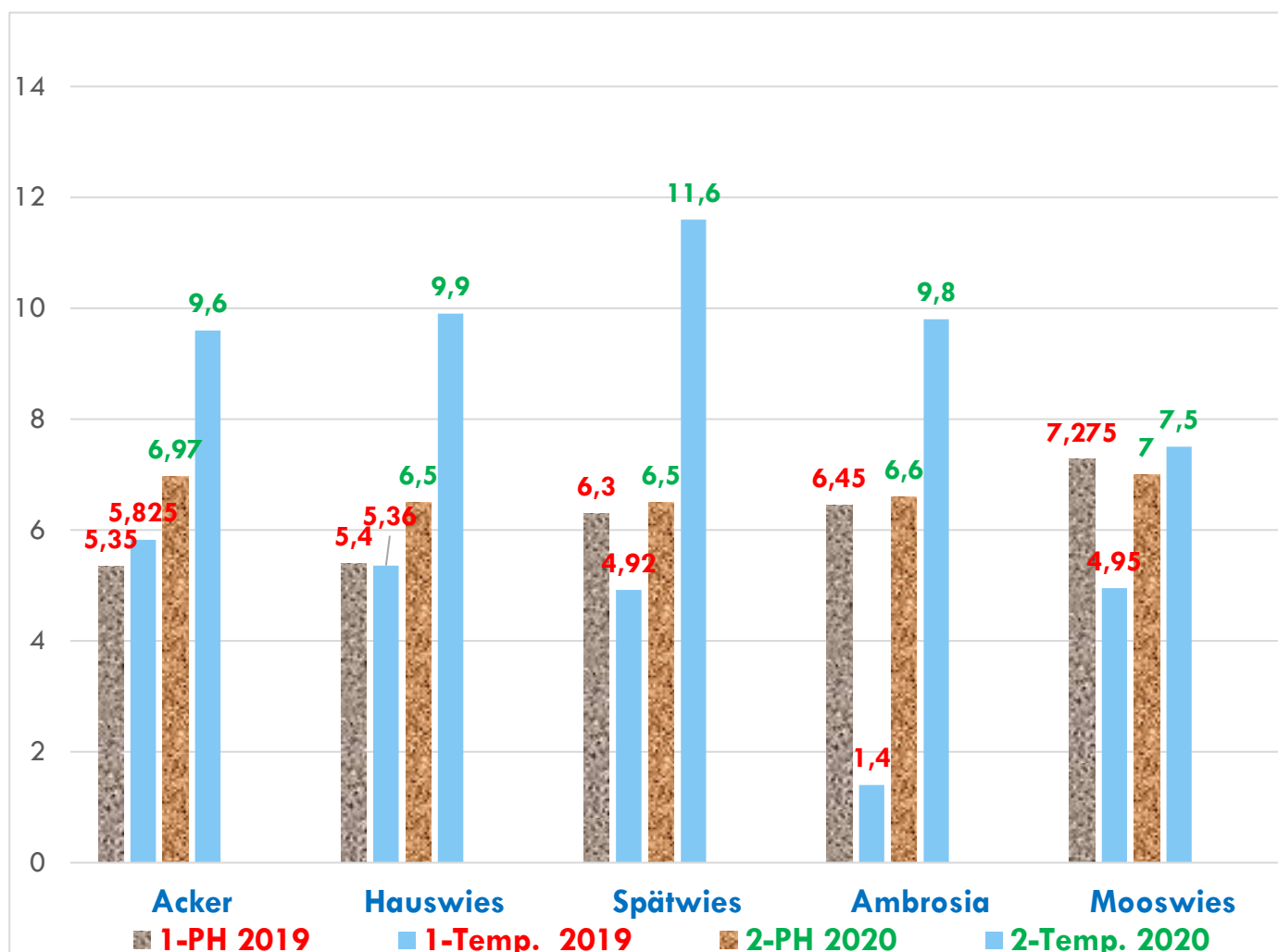
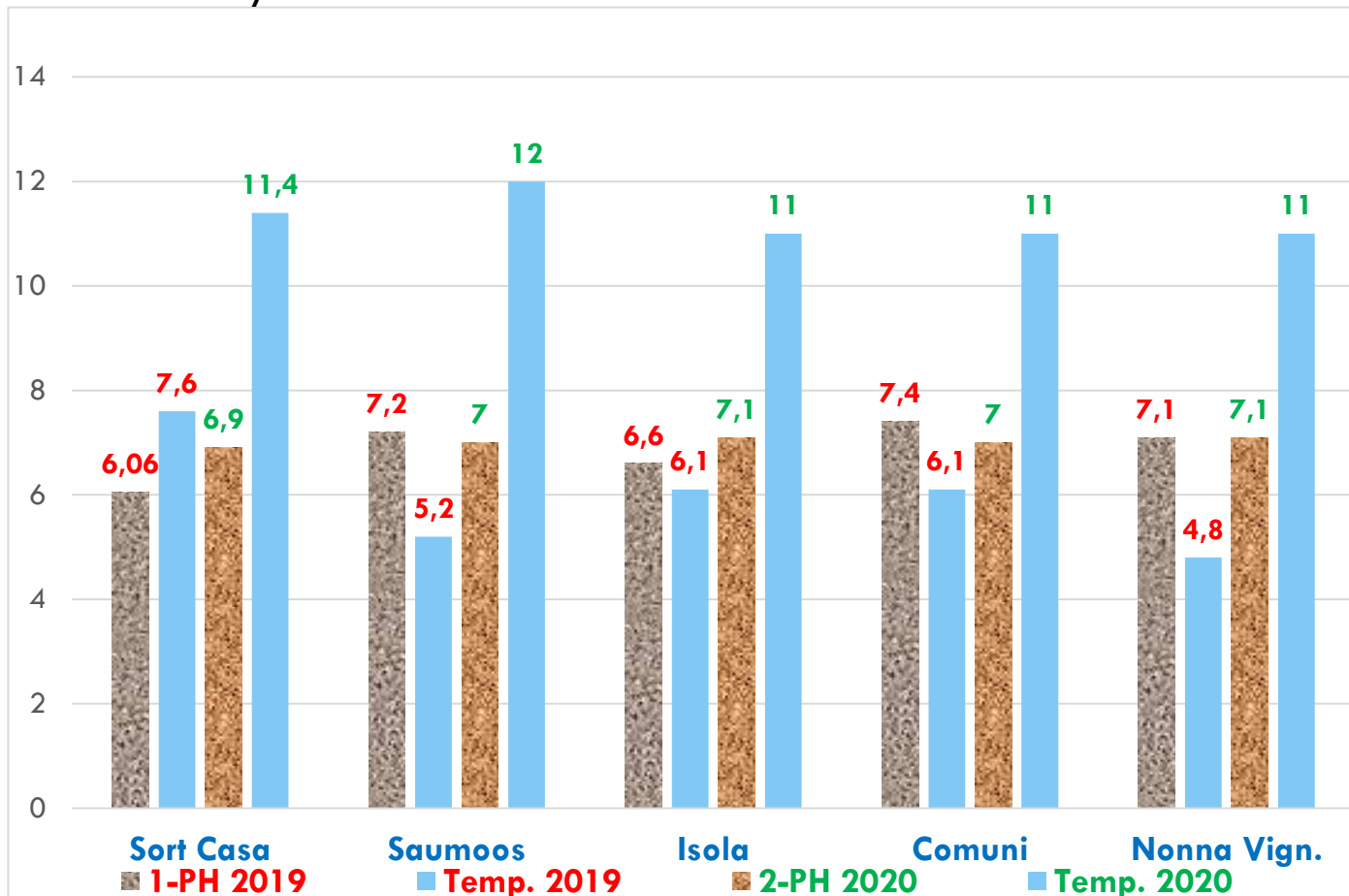


21.09.2017



Carried out the test on 5 apples on 2 sides and calculated the average values.

## After one year of PLOCHER Soil Additives and Plant Aids



The two different customers are clearly visible, the PH value in the soil is improved and adapts where it is needed.

After 4 years of **PLOCHER** overall concept even earthworm droppings in the middle of the lane were found and the humus content increased by 30%.



In May 2019 replanting fungus-resistant variety: Rubelit. Dipped and watered with **plocher plants do**.  
4 treatments **plocher humus soil me**.  
Spraying alternately with 500 g/ml **plocher leaf-special me** and **plocher combi-leaf mg/do**.



Fungus-resistant variety "Rubelit" planted in May 2019 and a year later in September 2020. Without chemical PPPs only **PLOCHER**



Gras super closed and lots of clover after only one year.

## Optimization of roots, leaves and flower formation.



For new plantings, dip the plants in water and **plocher do 10 g** to 10 l of water for a day in the dipping solution and afterwards water the plants with the leftover dipping solution.

Plants that are not suitable for dipping:  
water them over with a watering can using 10 g per 10 l.

## Important for a new plants



**Not treated with PLOCHER**

When replanting, before planting use **plocher humus soil me 2 l / ha** and after planting or sowing again use **plocher humus soil me 1 l / ha** to avoid hardening of the soil immediately. The loose soil allows the plants to grow better and thus the growth and strength of the plant can be increased. The first year of planting is very important for the plant, so we always recommend treatment with **plocher humus soil me 1 l / ha** after mulching.

The treatment is also important for good surface composting and thus also to increase the humus content more quickly. From the second year onwards, 3 – 4 treatments with **plocher humus soil me 1 l / ha** are sufficient (see vital plan Fruit Growing).

## ***plocher leaf – special me***



## plocher leaf-special me

**Recommendation from 5 years of observation:** After harvest and in spring 300 ml to 600 ml/ha, fewer pests were detected. Before, during and after flowering 300 ml to 600 ml / ha more bee flight and thus better pollination of the plants, summer spraying also fewer pests could be observed. Winter spraying: 300 ml and 500 **plocher humus soil me** over the leaf better leaf fall and composting and the habitat of the pests for overwintering is reduced. All our products are compatible with chem. Synt. PPP, but it is recommended to always pour the **PLOCHER-Products** into the sprayer first.



***With PLOCHER always beautiful, full blooms, more bees visible and very good pollination.***

**The only risk is not to try.**

## Cherry, berry and vegetable cultivation with PLOCHER



*Sowing in the middle of the lane and treated with PLOCHER*



*This fruit cultivation is also treated with PLOCHER*



Also, in organic cultivation PLOCHER is successfully used. Here with the variety "NATYRA". As of 5 May 2018, only treated With **plocher leaf-special, plocher combi-leaf do and mg**, each 300 g per ha over the leaf. Before harvesting, a treatment with calcium.



As you can see very well: beautiful color, first-class quality, simply great. Soil treatment with plocher **humus soil me** 1 l per ha - 3 treatments a year.

### Vineyards



*March 2017 Initial treatment  
plocher humus soil me*

March 2017: With 2 liter plocher humus soil me and with plocher leaf-special, plocher combi-leaf do and mg each 300 g mixed over the leaves. Already after 2 months, the grass is clearly visible and denser and a beautiful dark green color.



*After 2 months plocher humusboden me*

As you can clearly see in the control, the plants are weaker and smaller but after treatment with **PLOCHER** only 1 year later the plants are stronger, the leaves larger, darker color and more flowers. Overall picture of the area, it was easy to see that those plants treated with **PLOCHER** were stronger.



In autumn 2018, a little more harvest could also be achieved. After the harvest you could also observe very well, the leaves with **PLOCHER** were healthier overall, but during the control the leaves had a light green to a yellowish color (deficiency phenomenon). In late autumn it could also be observed that with PLOCHER the leaves had already all fallen off, but not in the control.

# Cherry, berry and vegetable cultivation with PLOCHER



First application of plocher humus soil, plocher leaf-special and plocher combi-leaf mg 2 years ago. 2 treatments per year plocher humus soil 1 l per ha and 300 g. plocher leaf-special or plocher combi-leaf mg, depending on vegetation and weather alternately over the leaf. The customer was very satisfied with his 2018 cherry harvest, was able to bring in about 20% more harvest than others. The cherries were very beautiful in color, natural shine and above average size.



In the picture on the left, you can see the above-average size of the cherries and on the right in the picture when measuring more than 35 in diameter.



With PLOCHER more than 35

In 2018, a very good harvest of raspberries, strawberries and cauliflower was also achieved with high quality, and the customer is very satisfied.



Raspberries with PLOCHER

WHO CALCULATES  
TAKES PLOCHER  
OF COURSE!



Cauliflower with PLOCHER

Oat sowing being mulched off and treated with 1 l plocher humus soil me for better area composting and then worked into the soil. In spring, the soil is treated again with 1 l plocher of humus soil, so that a faster humus build-up is achieved.



Left: Sowing of the "Tagetes – Flowers" soil treated with plocher humus soil. These are used before strawberries against nematodes.

Dense vegetation and the height are amazing, as you can see very well in this photo. As soon as the flowers have faded, they are mulched off and worked into the soil with 1 l plocher humus soil for surface composting for optimal humus build-up. In spring, another treatment is made with 1 l of humus soil and then the strawberries are planted with plocher plant do (dipping solution 10 g to 10 l of water) in order to achieve a faster rooting.

PLOCHER does not require any conversion of your operation. You can start right away without any problems, as step by step the chem.-synth. agents are reduced. As a rule, you can reduce 50 - 60 % of the chem.-synth. crop protection products and fertilizer!!

Not just watching,  
but acting!!  
Thank you very much



Your personal advisor for Italy **Santer Helmuth** Tel: 335 6740446 [www.santerh.it](http://www.santerh.it)